

2021

Dunn Ranches



Registered Black Angus

Misita Cattle Co.

Bred for Quality Beef, Maternal Efficiency & Longevity

480-205-5060



520-560-0721

Sale Book

To our Valued Buyers,

The drought has been making all of us rethink our planning for the year. Many of us have had to reduce the number of cows and/or heifers we are keeping. Because of this, we have shipped our herd to East Texas where our daughter Sam and her husband Chris have bought a ranch.

The bulls we are offering have all been through a feed conversion test and have been semen tested. They are thirteen to fifteen months of age.

As you look at the feed test data, you will see the bulls average gain 2.59 pounds per day and their conversion rate average for 60 days is 10.15 pounds of feed per pound of gain. This is below the industry average for both but is because we don't use a high grain feed mixture and we have it set up so they have to walk about ¼ mile each way to water. So, when looking at their results at the bottom of each bull's pedigree, compare them to each other and not to feedlot averages. The one piece of data that uses the raw conversion number and some DNA traits to measure the animal's feed efficiency and keep mature size in check is Residual Feed Intake or RFI number. The lower, the better on that. This year's bulls average for that is -1.11. Those bulls with a more minus number for RFI will most likely transmit more feed efficiency to their offspring without making them bigger. If cow size isn't a concern for you, then the feed conversion number should be more useful. Again, the lower that number, the more efficient. All of our registered bulls have a negative RFI, which we haven't seen in other bull offerings.

If you take DNA samples of your prospective heifers and select them for the RFI efficiency trait and use the tools we have in our offering as well, you should quickly see a resulting cowherd that is more efficient on the range and a calf that will bring a premium after buyers see how they perform.

There is another tool the Angus Association has developed to bring more value to your herd. The \$G, which stand for grid value, combines all the carcass traits into this number. The higher the number, the better. To qualify for the Certified Angus Beef label, an animal has to achieve a combination of marbling at or greater than +65 and a Grid Value, or \$G of +55. There are 6 bulls in this bunch that have achieved that. You will see the CAB label alongside their pedigree.

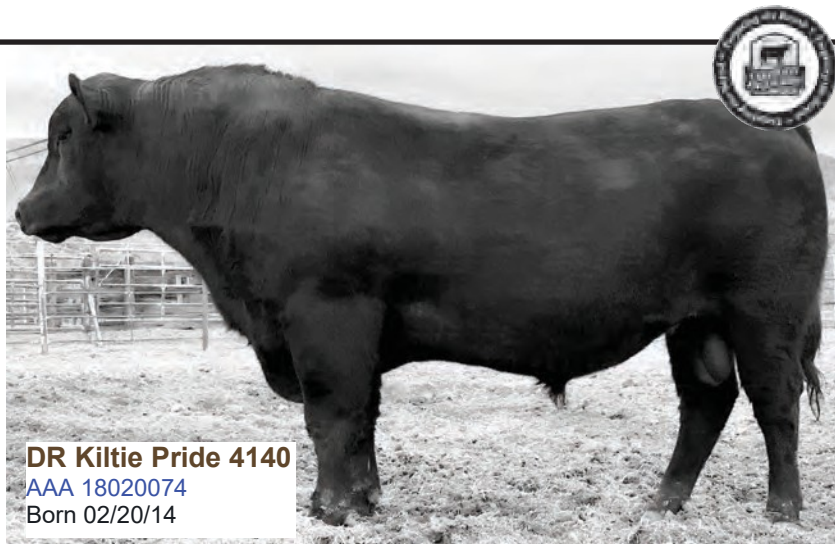
The bulls have all been semen tested by Dr. Larry Lunt and they all have the best guarantee in the business: 100%. Not for the first 90 days or the first season-if you are unhappy with any purchase, bring 'em back and we will either refund your money or give you credit on your next purchase.

Give us a call at 480-205-5060 (Chris) or 520-560-0721 (Bill) to come and look at our bulls this year.

The Dums & Mistis

Herd Sire:

DR KILTIE PRIDE 4140 : He is our senior herd sire . We chose him to be a sire because of his superior EPDs for efficiency (RADG top 20%, DMI top 15% and \$EN top 10%) as well as his outstanding carcass numbers that put him in the top 2% for \$ Feedlot, top 10% \$ Quality Grade and top 4% \$ Yield Grade of all Angus bulls. He has proven he can get his share of cows bred in our desert country and his daughters are turning out to be among our top producers.



DR Kiltie Pride 4140
 AAA 18020074
 Born 02/20/14

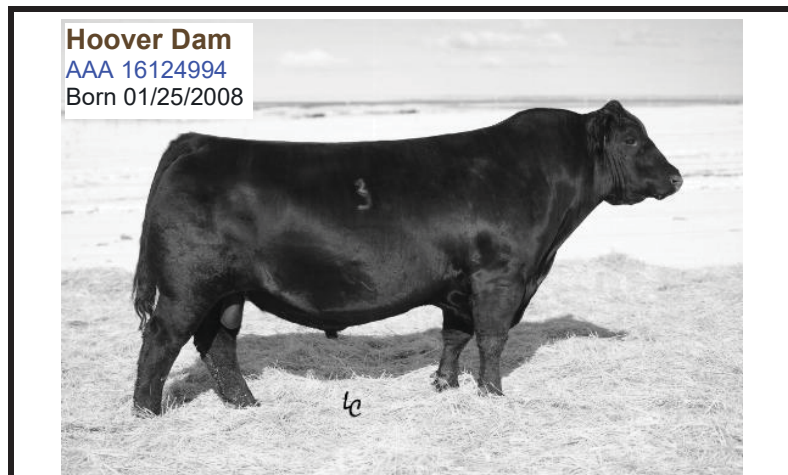
CED	BW	WW	YW	CEM	Milk	\$EN	CW	Marb	RE	Fat	\$M	\$F	\$B
Acc	Acc	Acc	Acc	Acc	Acc		Acc	Acc	Acc	Acc	\$W	\$G	\$C
+7	+1.2	+40	+77	+12	+14	+11	+19	+93	+69	-.012	+45	+68	+136
.31	.46	.68	.56	.28	.38		.46	.39	.39	.38	+28	+68	+221

All Sires:



KCF Bennett Absolute
 AAA 16430795
 Born 03/08/2009

Production										Maternal						
CED	BW	WW	YW	RADG	DMI	YH	SC	Doc	HP	CEM	Milk	MkH	MW	MH	\$EN	
Acc	Acc	Acc	Acc	Acc	Acc	Acc	Acc	Acc	Acc	Acc	Acc	Acc	Acc	Acc	Acc	
%	%	%	%	%	%	%	%	%	%	%	%	%	%	%	%	
+11	-.1	+62	+114	+29	+07	+1	+104	+18	+10.9	+9	+20	389	+53	+0	+53	
.92	.97	.96	.94	.79	.79	.95	.94	.92	.71	.87	.87	126	.77	.79	.79	
15%	25%	25%	20%	10%	35%	85%	30%	40%	45%	45%	75%	20%	75%	75%	30%	
2732	8133	8006	4280	190	2487	1987	1197	209	1224	156	156					
Carcass							\$Values									
CW	Marb	RE	Fat	Carc	Usnd	\$W	\$F	\$G	\$QG	\$YG	\$B					
Acc	Acc	Acc	Acc	Grp	Grp	%	%	%	%	%	%					
%	%	%	%	Prog	Prog											
+45	+.75	+.72	+.030	37	1389	+63.80	+86.43	+43.17	+39.44	+3.73	+156.04					
.79	.77	.73	.77	87	3812											
30%	20%	20%	75%			20%	15%	20%	20%	60%	15%					



Hoover Dam
 AAA 16124994
 Born 01/25/2008

Production										Maternal						
CED	BW	WW	YW	RADG	DMI	YH	SC	Doc	HP	CEM	Milk	MkH	MW	MH	\$EN	
Acc	Acc	Acc	Acc	Acc	Acc	Acc	Acc	Acc	Acc	Acc	Acc	Acc	Acc	Acc	Acc	
%	%	%	%	%	%	%	%	%	%	%	%	%	%	%	%	
+8	-.2	+46	+88	+26	-.07	+1	+85	+21	+9.4	+8	+24	1253	+18	+0	+7.3	
.94	.98	.97	.96	.71	.71	.96	.96	.94	.79	.93	.94	4615	.86	.86	.86	
40%	20%	70%	60%	20%	25%	85%	45%	25%	65%	55%	50%	70%	70%	75%	15%	
4392	16168	16156	8923	69	3126	3312	2167	373	3419	416	416					
Carcass							\$Values									
CW	Marb	RE	Fat	Carc	Usnd	\$W	\$F	\$G	\$QG	\$YG	\$B					
Acc	Acc	Acc	Acc	Grp	Grp	%	%	%	%	%	%					
%	%	%	%	Prog	Prog											
+40	+.76	+.79	-.006	57	2651	+55.33	+52.13	+47.45	+39.75	+7.70	+146.76					
.84	.83	.79	.83	146	7058											
40%	20%	15%	25%			35%	50%	15%	20%	15%	20%					

2021 SALE BULLS

0120 DR Yield Grade 4138 0120

Adj Yrlg	Birth Dt:	03/09/20	Angus GS	Bull	19777403	Tattoo:	0120								
Hip Ht	CED	BW	WW	YW	RADG	DMI	YH								
	+8	35%	-4	20%	+40	95%	+82	85%	+28	20%	-20	2%	+7	30%	
Adj Yrlg	SC	Doc	HP	CEM	Milk	MW	MH								
Scr Cir	30.57	-56	95%	+13	75%	+9.2	80%	+7	70%	+28	30%	+45	70%	+2	70%
Adj	\$EN	CW	Marb	RE	Fat	\$M									
% IMF	-12	45%	+34	80%	+49	65%	+60	50%	-.024	10%	+38	95%			
% IMF Ratio	DR Yield Grade 2111 [AMF-DDF-OSF]											+43	90%		
Adj RE	DFDR Yield Grade 2111 4138											\$F			
RE Ratio	18065052											+90	40%		
Adj Rib Fat	DR Kiltie Pride 870 2123 [AMF-DDF-XF]											\$G			
Rib Fat Ratio	DR Kiltie Pride 870 0895 [AMF-DDF-OSF]											+46	50%		
Adj Rump Fat	DR Hobo Elence 870 0878 [AMF-OSF]											\$B			
Rump Fat Ratio	16788491											+136	50%		
Adj Rump Fat	Dun Mor Elegance 5768 616											\$C			
Rump Fat Ratio	DR 613 Elegance 9718											+214	75%		

0126 DR Absolute 8167 0126

Adj Yrlg	Birth Dt:	02/16/20	Angus GS	Bull	19800770	Tattoo:	0126								
Hip Ht	CED	BW	WW	YW	RADG	DMI	YH								
	+6	55%	+2.1	70%	+40	95%	+68	95%	+18	95%	-27	1%	+4	65%	
Adj Yrlg	SC	Doc	HP	CEM	Milk	MW	MH								
Scr Cir	33.86	+42	75%	+15	65%	+12.9	40%	+12	15%	+20	85%	+8	95%	+3	60%
Adj	\$EN	CW	Marb	RE	Fat	\$M									
% IMF	+9	5%	+22	95%	+82	25%	+23	95%	+0.23	70%	+59	60%			
% IMF Ratio	S A V Final Answer 0035 [AMF-CAF-XF]											\$W			
Adj RE	DR Absolute 1783 8167 [AMF-CAF-XF]											+36	95%		
RE Ratio	19214569											\$F			
Adj Rib Fat	DR Erica Belle 616 1007 [DDF]											+63	95%		
Rib Fat Ratio	16798339											+52	35%		
Adj Rump Fat	Sam's Princess Bell 8012 151											\$B			
Rump Fat Ratio	Mr Ebony Cross 8012 Et											+115	80%		
Adj Rump Fat	Sams Paragon 6001											\$C			
Rump Fat Ratio	8-105											+208	80%		

0134 DR Absolute Pride 1873 0134

Adj Yrlg	Birth Dt:	02/17/20	Angus GS	Bull	19779182	Tattoo:	0134								
Hip Ht	CED	BW	WW	YW	RADG	DMI	YH								
	+4	70%	+1.5	60%	+57	60%	+103	55%	+25	45%	+36	15%	+3	75%	
Adj Yrlg	SC	Doc	HP	CEM	Milk	MW	MH								
Scr Cir	33.31	+18	90%	+2	95%	+7.2	95%	+7	70%	+19	90%	+70	40%	+3	60%
Adj	\$EN	CW	Marb	RE	Fat	\$M									
% IMF	-19	65%	+44	55%	+62	45%	+56	55%	+0.045	90%	+21	95%			
% IMF Ratio	S A V Final Answer 0035 [AMF-CAF-XF]											\$W			
Adj RE	K C F Bennett Absolute [AMF-CAF-XF]											+50	75%		
RE Ratio	#16430795											\$F			
Adj Rib Fat	Wulffs Ext 6106											+97	25%		
Rib Fat Ratio	Thomas Miss Lucy 5152 [AMF-DDF-NHF]											\$G			
Adj Rump Fat	DR Kittie Pride 55H 1112 [AMF-DDF-OSF]											+46	50%		
Rump Fat Ratio	17210967											+143	40%		
Adj Rump Fat	MLCC-KITTIE PRIDE-8835											\$B			
Rump Fat Ratio	Dun Mor Rito 616 of 5842											+206	80%		

0140 DR Absolute Pride 8167 0140 [DDP-OSF]

Adj Yrlg	Birth Dt:	02/23/20	Angus GS	Bull	19800767	Tattoo:	0140								
Hip Ht	CED	BW	WW	YW	RADG	DMI	YH								
	+3	80%	+3.0	85%	+55	65%	+108	45%	+31	10%	+85	40%	+8	20%	
Adj Yrlg	SC	Doc	HP	CEM	Milk	MW	MH								
Scr Cir	34.99	+1.15	30%	+8	90%	+8.2	90%	+10	35%	+20	85%	+64	50%	+5	40%
Adj	\$EN	CW	Marb	RE	Fat	\$M									
% IMF	-17	60%	+50	40%	+57	55%	+67	40%	-.031	10%	+42	95%			
% IMF Ratio	S A V Final Answer 0035 [AMF-CAF-XF]											\$W			
Adj RE	DR Absolute 1783 8167 [AMF-CAF-XF]											+42	90%		
RE Ratio	19214569											\$F			
Adj Rib Fat	G A R Yield Grade [AMF-CAF-XF]											+103	15%		
Rib Fat Ratio	17545674											\$G			
Adj Rump Fat	Dun Mor Rito 616 of 5842											+51	35%		
Rump Fat Ratio	MLCC-KILTIE PRIDE-8788											\$B			

0154 DR Kiltie Pride 4140 0154

Adj Yrlg	Birth Dt:	02/14/20	Angus GS	Bull	*19777409	Tattoo:	0154								
Hip Ht	CED	BW	WW	YW	RADG	DMI	YH								
	+7	45%	+2	30%	+42	95%	+78	90%	+20	85%	+45	15%	+3	75%	
Adj Yrlg	SC	Doc	HP	CEM	Milk	MW	MH								
Scr Cir	38.20	+1.50	15%	-3	95%	+15.9	15%	+15	3%	+27	40%	+26	90%	+1	75%
Adj	\$EN	CW	Marb	RE	Fat	\$M									
% IMF	-3	20%	+27	90%	+50	60%	+45	75%	+0.41	85%	+60	60%			
% IMF Ratio	Gardens Highmark [AMF-CAF-XF]											\$W			
Adj RE	DR Kiltie Pride 4140 [DDF-OSF]											+48	80%		
RE Ratio	18020074											\$F			
Adj Rib Fat	DR Elegance 229 3130 [DDF]											+67	90%		
Rib Fat Ratio	17767449											+40	65%		
Adj Rump Fat	Dun Mor Elegance 5768 616											\$B			
Rump Fat Ratio	5-107											+107	90%		

0160 DR Reserve 1852 0160

Adj Yrlg	Birth Dt:	02/18/20	Angus GS	Bull	19779185	Tattoo:	0160								
Hip Ht	CED	BW	WW	YW	RADG	DMI	YH								
	+6	55%	+1.2	50%	+51	75%	+84	85%	+20	85%	+30	10%	+3	75%	
Adj Yrlg	SC	Doc	HP	CEM	Milk	MW	MH								
Scr Cir	33.33	-51	95%	+11	80%	+11.9	55%	+6	80%	+24	60%	+48	70%	+2	70%
Adj	\$EN	CW	Marb	RE	Fat	\$M									
% IMF	-12	45%	+24	95%	+67	40%	+78	25%	-.053	1%	+53	75%			
% IMF Ratio	Boyd New Day 8005 [AMF-CAF-XF]											\$W			
Adj RE	V A R Reserve 1111 [AMF-CAF-XF]											+53	70%		
RE Ratio	#16916944											\$F			
Adj Rib Fat	Sandpoint Blackbird 8809 [AMF]											+58	95%		
Rib Fat Ratio	EF Complement 8088 [AMF-CAF-XF]											\$G			
Adj Rump Fat	DR Elegance 4878											+59	20%		
Rump Fat Ratio	18040261											\$B			
Adj Rump Fat	Dun Mor Elegance 5768 616											+117	75%		
Rump Fat Ratio	5-108											\$C			

2021 SALE BULLS

0161

Adj Yrlg	Birth Dt: 02/25/20	Angus GS	Bull	BIR 625811837	Tattoo: 0161				
Hip Ht	CED	BW	WW	YW	RADG	DMI	YH		
Adj Yrlg	SC	Doc	HP	CEM	Milk	MW	MH		
Scr Cir									
Adj	\$EN	CW	Marb	RE	Fat	\$M			
% IMF									
% IMF Ratio	S A V Final Answer 0035 [AMF-CAF-XF] K C F Bennett Absolute [AMF-CAF-XF] Thomas Miss Lucy 5152 [AMF-DDF-NHF]						\$W		
Adj RE	DR Absolute 1783 8167 [AMF-CAF-XF]	Gardens Wave [AMF-CAF-XF]					\$F		
RE Ratio	19214569	DR Wave 4870 [AMF-OSF] Dun Mor EXT 498 of 5742					\$G		
Adj Rib Fat	161	BIR 624813587					\$C		
Rib Fat Ratio	BW	CE	BWR	ADJ WW	VWR	ADJ YW	YWR	Test ADG	GR
Adj Rump Fat	Dam's Production Record				Dam's Ultrasound Production Record				
Rump Fat Ratio	ACT BW	BWR	WWR	YWR	% IMF	RE	Fat	RU Fat	
			3-104	1-102					
	Price: \$2500								
	ADG 2.58								
	Conv 8.39								

0177

Adj Yrlg	Birth Dt: 03/06/20	Angus GS	Bull	*19777413	Tattoo: 0177				
Hip Ht	CED	BW	WW	YW	RADG	DMI	YH		
Adj Yrlg	SC	Doc	HP	CEM	Milk	MW	MH		
Scr Cir									
Adj	\$EN	CW	Marb	RE	Fat	\$M			
% IMF									
% IMF Ratio	S A V Final Answer 0035 [AMF-CAF-XF] K C F Bennett Absolute [AMF-CAF-XF] Thomas Miss Lucy 5152 [AMF-DDF-NHF]						\$W		
Adj RE	DR Absolute 1783 8167 [AMF-CAF-XF]	Gardens Wave [AMF-CAF-XF]					\$F		
RE Ratio	19214569	DR Wave 4870 [AMF-OSF] Dun Mor EXT 498 of 5742					\$G		
Adj Rib Fat	DR Alamo Eileen 1774 5886 [OSF]	Basin Franchise P142 [NHC-AMF-XF] EF Complement 8088 [AMF-CAF-XF] EF Everelda Entense 6117					\$B		
Rib Fat Ratio	18392377	Ironwood New Level [AMF-CAF-XF] 5765 DR 613 Alamo Eileen 9707					\$C		
Adj Rump Fat	Dam's Production Record				Dam's Ultrasound Production Record				
Rump Fat Ratio	ACT BW	BWR	WWR	YWR	% IMF	RE	Fat	RU Fat	
			4-104	4-102	1-78	1-102	1-83	1-73	
	Price: \$3500								
	ADG 1.83	Conv 13.37	RFI -1.39						

0183

Adj Yrlg	Birth Dt: 03/25/20	Angus GS	Bull	*19903701	Tattoo: 0183				
Hip Ht	CED	BW	WW	YW	RADG	DMI	YH		
Adj Yrlg	SC	Doc	HP	CEM	Milk	MW	MH		
Scr Cir									
Adj	\$EN	CW	Marb	RE	Fat	\$M			
% IMF									
% IMF Ratio	Gardens Wave [AMF-CAF-XF] Gardens Highmark [AMF-CAF-XF] Green Garden Lady 6255 S2						\$W		
Adj RE	DR Kiltie Pride 4140 [DDF-OSF]	G A R Yield Grade [AMF-CAF-XF]					\$F		
RE Ratio	18020074	DFDR Kiltie Pride 229 2114 [AMF] MLCC-KILTIE PRIDE-8788					\$G		
Adj Rib Fat	DR Princess Belle 2111 5141 [DDF-OSF]	G A R Yield Grade [AMF-CAF-XF] MLCC-BLOSSOM-498-8844					\$B		
Rib Fat Ratio	18407155	G A R Yield Grade [AMF-CAF-XF] DFDR Princess Belle 229 2126 [DDF] DR Erica Belle 6i6 1007 [DDF]					\$C		
Adj Rump Fat	Dam's Production Record				Dam's Ultrasound Production Record				
Rump Fat Ratio	ACT BW	BWR	WWR	YWR	% IMF	RE	Fat	RU Fat	
			3-101	2-105					
	Price: \$4500								
	ADG 3.00	Conv 7.77	RFI -1.30						

0199

DR Kiltie Pride 4140 0199 [AMF]

Adj Yrlg	Birth Dt: 04/14/20	Angus GS	Bull	*19794724	Tattoo: 0199				
Hip Ht	CED	BW	WW	YW	RADG	DMI	YH		
Adj Yrlg	SC	Doc	HP	CEM	Milk	MW	MH		
Scr Cir									
Adj	\$EN	CW	Marb	RE	Fat	\$M			
% IMF									
% IMF Ratio	Gardens Wave [AMF-CAF-XF] Gardens Highmark [AMF-CAF-XF] Green Garden Lady 6255 S2						\$W		
Adj RE	DR Kiltie Pride 4140 [DDF-OSF]	G A R Yield Grade [AMF-CAF-XF]					\$F		
RE Ratio	18020074	DFDR Kiltie Pride 229 2114 [AMF] MLCC-KILTIE PRIDE-8788					\$G		
Adj Rib Fat	DR Lady Jewel 2111 6113 [AMC-DDF-OSF]	G A R Yield Grade [AMF-CAF-XF] MLCC-BLOSSOM-498-8844					\$B		
Rib Fat Ratio	18724593	Dun Mor Rito 6i6 of 5842 MLCC-LADY JEWEL-8804 DR EXT Lady Jewel 1763					\$C		
Adj Rump Fat	Dam's Production Record				Dam's Ultrasound Production Record				
Rump Fat Ratio	ACT BW	BWR	WWR	YWR	% IMF	RE	Fat	RU Fat	
			2-100	1-93					
	Price: \$3500								
	ADG 3.17								
	Conv 7.05								

0203

DR Pioneer 7163 0203

Adj Yrlg	Birth Dt: 03/21/20	Angus GS	Bull	*19777419	Tattoo: 0203				
Hip Ht	CED	BW	WW	YW	RADG	DMI	YH		
Adj Yrlg	SC	Doc	HP	CEM	Milk	MW	MH		
Scr Cir									
Adj	\$EN	CW	Marb	RE	Fat	\$M			
% IMF									
% IMF Ratio	S A V Pioneer 7301 [AMF-CAF-XF] B3R Pioneer Wave Y409 [AMF-CAF-XF] HR T424 RO26 GW						\$W		
Adj RE	DR Pioneer 1871 7163 [OSF]	DR Yield Grade 2111 [AMF-DDF-OSF]					\$F		
RE Ratio	*19046622	DFDR Kiltie Pride 2111 4114 [AMF-DDF-OSF] MLCC-KILTIE PRIDE-8788					\$G		
Adj Rib Fat	DR Princess Belle 4895 6148 [DDF]	EF Complement 8088 [AMF-CAF-XF] Dunmor Kiltie Pride 498 6788					\$B		
Rib Fat Ratio	#18678956	G A R Yield Grade [AMF-CAF-XF] DR Princess Belle 229 3128 DFDR Princess Belle D806 1001					\$C		
Adj Rump Fat	Dam's Production Record				Dam's Ultrasound Production Record				
Rump Fat Ratio	ACT BW	BWR	WWR	YWR	% IMF	RE	Fat	RU Fat	
			3-106	1-105					
	Price: \$3500								
	ADG 3.33	Conv 7.14	RFI -1.17						

0210

MC Elegant Wave 0210

Adj Yrlg	Birth Dt: 03/10/20	Angus GS	Bull	*19782057	Tattoo: 0210				
Hip Ht	CED	BW	WW	YW	RADG	DMI	YH		
Adj Yrlg	SC	Doc	HP	CEM	Milk	MW	MH		
Scr Cir									
Adj	\$EN	CW	Marb	RE	Fat	\$M			
% IMF									
% IMF Ratio	Gardens Wave [AMF-CAF-XF] Gardens Highmark [AMF-CAF-XF] Green Garden Lady 6255 S2						\$W		
Adj RE	DR Wave 1701 5126 [DDF-OSF]	Rito 6i6 of 4B20 6807 [AMF-CAF-XF]					\$F		
RE Ratio	18372461	DR Erica Belle 6i6 1007 [DDF] Sam's Princess Belle 8012 151					\$G		
Adj Rib Fat	DR Elegant Edella 2105 7133 [OSF]	G A R Yield Grade [AMF-CAF-XF] MLCC Lady Beulah 6i6-7124					\$B		
Rib Fat Ratio	19046777	G A R Yield Grade [AMF-CAF-XF] S S Decatur 55H [AMF-CAF-XF] DFDR Elegant Edella 55H 1110 [AMF-DDF-OSF] MLCC-NEW LEVEL-8876					\$C		
Adj Rump Fat	Dam's Production Record				Dam's Ultrasound Production Record				
Rump Fat Ratio	ACT BW	BWR	WWR	YWR	% IMF	RE	Fat	RU Fat	
			2-84	1-84					
	Price: \$2500								
	ADG 1.50								
	Conv 13.64								

Dunn Ranches

Breeding Registered Angus since 1964

We offer the best guarantee in the business:

100%

It doesn't get any better than that!

Not for the first 90 days or the first season- if you are unhappy with any purchase, bring 'em back and we will either replace them or give you your money back, That is how confident we are in the product we raise and sell.

